

BRAKETEK

Innovation In Braking

NEW RELEASE

BT23K SERIES LININGS

BRAKETEK SPECIALISES IN THE DESIGN AND MANUFACTURING OF PREMIUM QUALITY BRAKE SHOE KITS TO SUIT HEAVY COMMERCIAL VEHICLES

Innovation is at the heart of what we do. We stay focused on performance and durability, delivering heavy duty brake products in conjunction with industry needs and demands. This results in continued success, setting BrakeTek apart from other brake brands in the market.



RELIABLE PRODUCTS



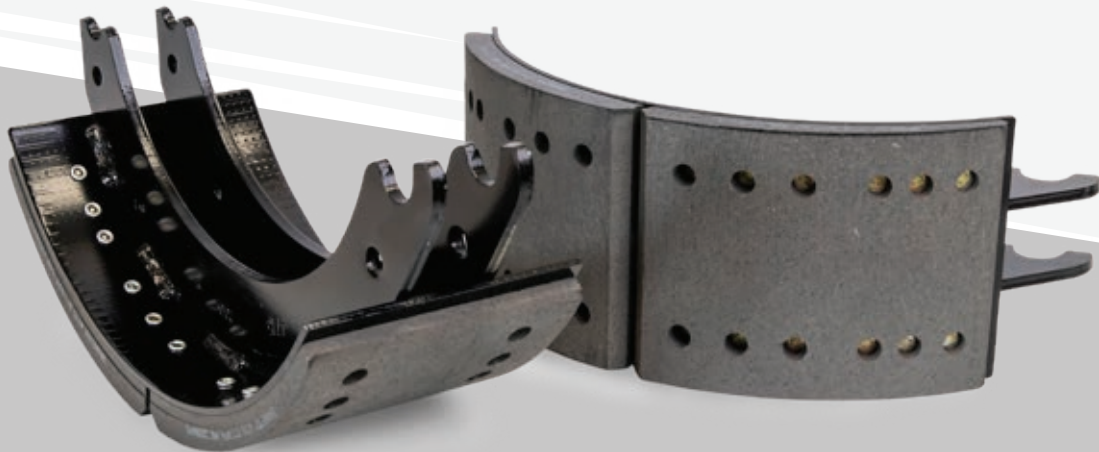
EXCEPTIONAL PERFORMANCE



EXCELLENT SERVICE



SUPERIOR BRAKE QUALITY



TESTED TO EXCEED INDUSTRY STANDARD PERFORMANCE REQUIREMENTS AND DESIGNED WITH LEADING EDGE TECHNOLOGY, BRAKETEK RANGE COMES UNDER THE BEST CATEGORY

GOOD

AFTERMARKET REPLACEMENT

AFTERMARKET UPGRADE

OEM REPLACEMENT

BEST

BT23K LININGS

BT23K SERIES LININGS



LONG LIFE



LOW NOISE



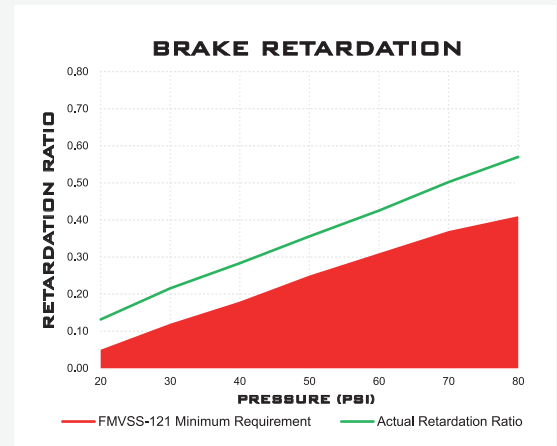
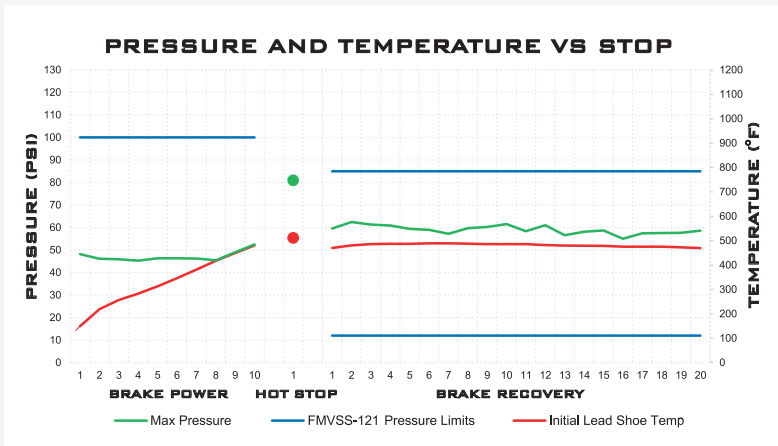
LOW DRUM WEAR

BT23K is a premium brake lining designed to address fleet needs for extended service life and superior stopping power in linehaul and specialist applications.

Exceeding the brake performance standards of FMVSS-121 testing requirements BrakeTek BT23K brake linings deliver better performance and longer life. With excellent heat dissipation properties our linings can perform repeated stops with superior brake fade and recovery effectiveness. Engineered and rated for 23,000lb axle loads BrakeTek BT23K brake linings deliver excellent service life in a variety

of demanding environments. Our shoes are structurally robotically welded for reliable and consistent torsional reinforcement. The cam and anchor ends are broached to ensure coaxiality. Journal ends are also heat treated to increase the durability of our brake shoes. BrakeTek uses a proprietary digital riveting pressure monitoring system to detect defects in real time and prevent loose or overly-tight rivets with 99.99% reliability. Our advanced anti-corrosion surface coating is designed to allow our brake linings to have outstanding durability in the tough Australian conditions.

- Premium friction material exceeds FMVSS-121 requirements
- Rated for 23,000lb axle loads
- Excellent fade and recovery properties in demanding environments
- Exceptional performance and superior stopping power
- Extended service life in linehaul and specialist applications
- Reduced maintenance costs, downtime over comparable products





LONG
LIFE



LOW
NOISE



LOW DRUM
WEAR

BRAKE HARDWARE KIT INCLUDED 23,000LB PREMIUM RATED LINING EXCEEDS FMVSS-121 STANDARD

BRAKE SHOE KITS

BSK4715QP



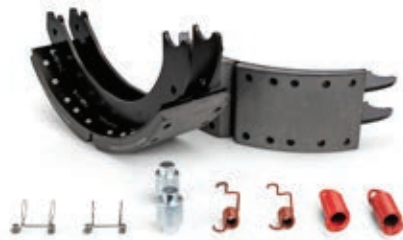
Features:

- Premium friction material exceeds FMVSS-121 requirements
- Rated up to 23,000lb gross axle loads
- Structurally reinforced welding for torsional reinforcement
- Heat treated cam and anchor ends for longer service life

Benefits:

- Exceptional performance and superior stopping power
- Extended service life in linehaul and specialist applications
- Reduced maintenance costs and downtime over comparable products
- Excellent fade and recovery properties in demanding environments

BSK4719ES2



BSKBC371B95



BSK4591



PRODUCT CODE	DESCRIPTION
BSK4720QP	BrakeTek 4720 Shoe Kit Inc Hardware
BSKBC371B95	BrakeTek BC37 Shoe Kit Inc Hardware
BSK4709ES2	BrakeTek 4709 Shoe Kit Inc Hardware
BSKBC1001	BrakeTek B95 BC100 Shoe Kit Inc Hardware
BSK4711QP	BrakeTek 4711 Shoe Kit Inc Hardware
BSKYKB12	BrakeTek York Shoe Kit Inc Hardware
BSK4715QP	BrakeTek 4715 Shoe Kit Inc Hardware
BSK4223A	BrakeTek 4223 Shoe Kit Inc Hardware
BSK4311	BrakeTek 4311 Shoe Kit Inc Hardware
BSK4524Q	BrakeTek 4524Q Shoe Kit Inc Hardware
BSK4725ES2	BrakeTek 4725 Shoe Kit Inc Hardware
BSKSAFBC361	BrakeTek SAF J Shoe Kit Inc Hardware
BSKSJ2829	BrakeTek SAF SK/RS Shoe Kit Inc Hardware
BSK4719ES2	BrakeTek 4719ESII Shoe Kit Inc Hardware
BSK4514Q	BrakeTek 4514Q Shoe Kit Inc Hardware
BSK4524P	BrakeTek 4524P Shoe Kit Inc Hardware
BSK4710QP	BrakeTek 4710 Shoe Kit Inc Hardware
BSK4591	BrakeTek 4591 Shoe Kit Inc Hardware
BSK4711P	BrakeTek 4711P Shoe Kit Inc Hardware